

See the future
SIUI

Graceful and intelligent, redefine the standard
Apogee 5500

See the future
SIUI

Shantou Institute of Ultrasonic Instruments Co., Ltd.

HEADQUARTERS:

Shantou Institute of Ultrasonic Instruments Co., Ltd.
Add: No.77, Jinsha Road, Shantou 515041 Guangdong, China
Tel: 86-754-8825 0150 Fax: 86-754-8825 1499
E-mail: siui@siui.com

HONG KONG OFFICE:

Shantou Institute of Ultrasonic Instruments (HK) Co., Ltd.
Add: Room 2101, Tung Chiu Commercial Center
193 Lockhart Road, Wanchai, Hong Kong
Tel: 852-2891 6722 Fax: 852-2891 6723

www.siui.com



© All rights reserved to SIUI 2014

Apogee 5500/8A01



Intelligent medical solutions

Cloud Communication

- Share special cases with other users
- Discuss technical issues with other users



Cloud Maintenance

- Seek for solutions when system breaks down
- Realtime system upgrade after downloading

Cloud Information

- Access to industry information and academic information



ULTRACLOUD



Cloud Diagnosis

- Seek help from experts for diagnosis problems

Cloud Backup

- Save exam modes/parameters on the shared server
- Share preferred parameter with another system
- Off-line access to patient record



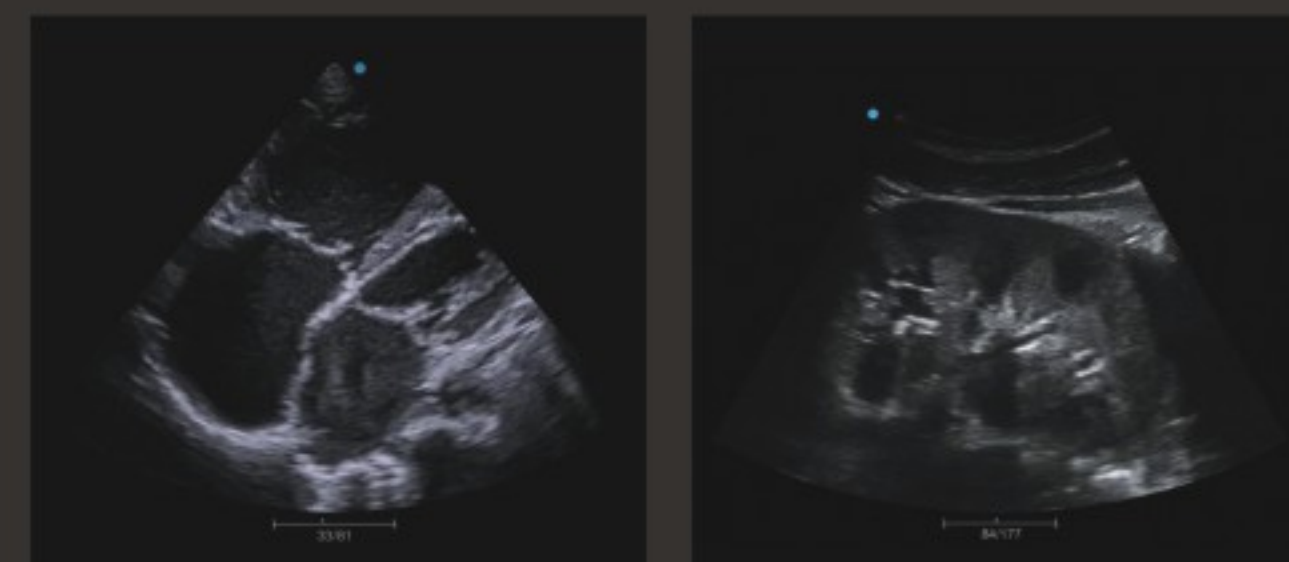
Cloud Teaching

- Adjust your parameter to obtain optimal images
- Use the scanning technique to acquire a standard section
- Quickly reach to specific item to obtain the calculation result

Premium image quality
reveals more **detailed** information

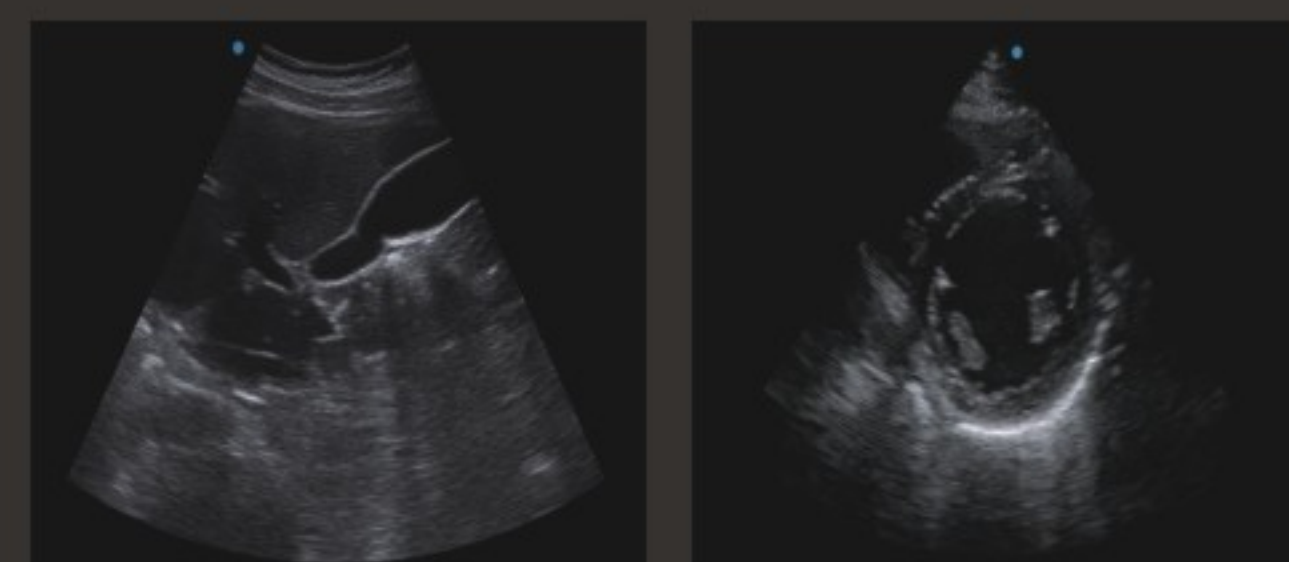
Macro Fidelity (MFI)

With the MFI technology, Apogee 5500 effectively makes up the spatial resolution gap caused by discrete signals and enhances filtering accuracy. By reducing signal distortion and eliminating unwanted noises, it renders premium images with outstanding resolution, high contrast and enhanced penetration.



Fusion Tissue Harmonic Imaging (Fusion THI)

Real-time fusing the information from different frequency bands, Fusion THI implements the broadband transmission and reception of harmonic waves. With enhanced image resolution and penetration, the system will help to boost your diagnostic confidence.



Foco Tracing

With accurate focusing and aperture control, Foco Tracing effectively minimizes side beams, artifacts and noises. It presents a distinct and well-distributed image with balanced present in both near and far field.

Wideband-beam Emission Technology

It is a beam processing technology that remarkably eliminates artifacts and guarantees high resolution in both near and far fields of B mode.

Progressive technology
leads to **accurate** diagnosis

VS-Flow

VS-Flow collects the valid vector information from Doppler signals by frequency modulation. It enables high sensitivity of capillary vessels with extraordinary resolution.

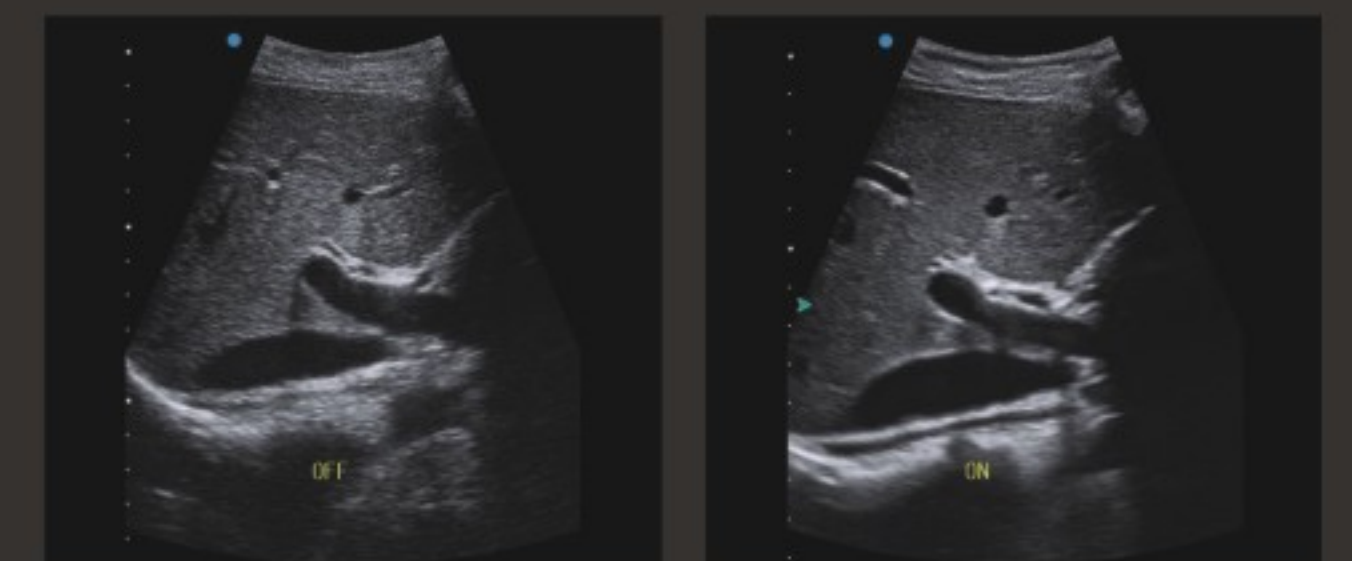


FusionFreq

FusionFreq helps to eliminate speckle noises in sub-frequency by merging the frequency information. By fusing both low and high frequency signals, it accomplishes a depth-independent resolution to achieve perfect images.

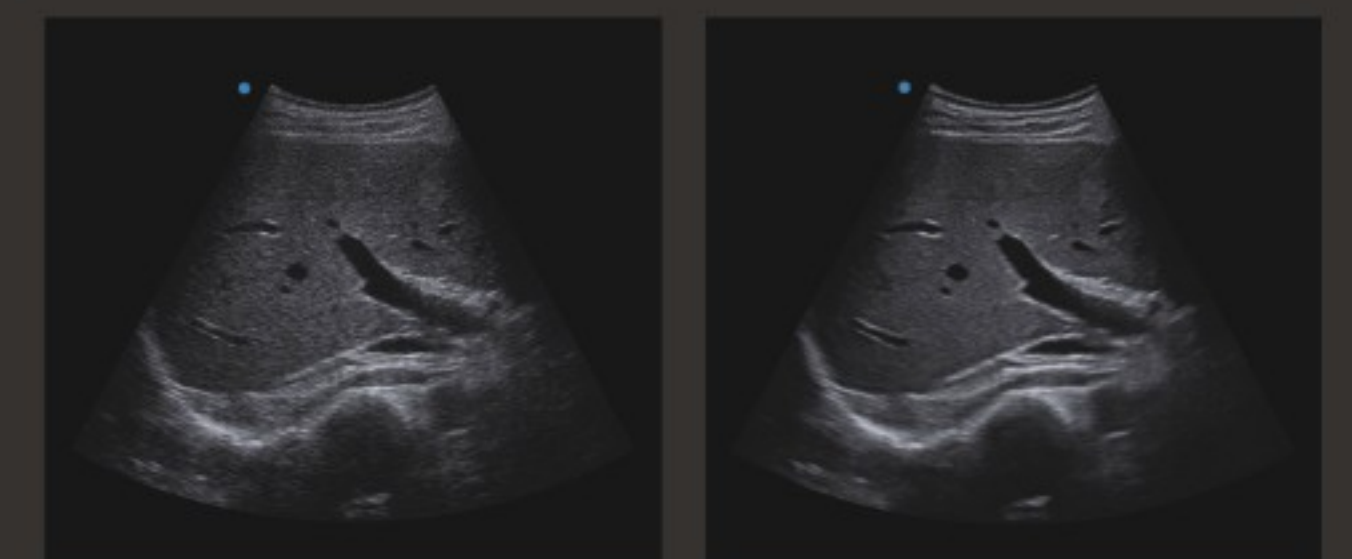
XBeam

By emitting ultrasonic beams from different angles, XBeam reduces the dependence from receiving angles to create images without compromise.



Nanoview

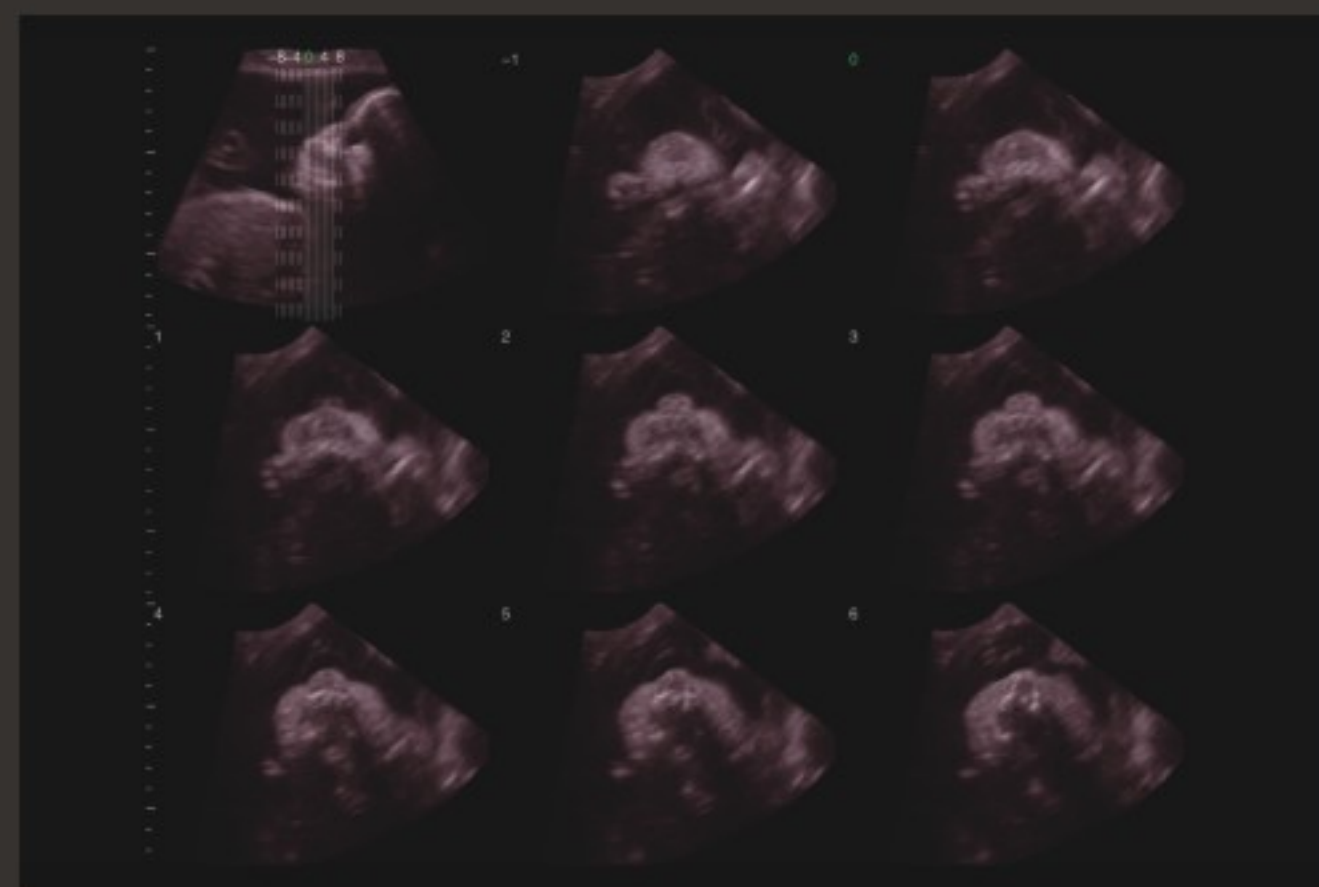
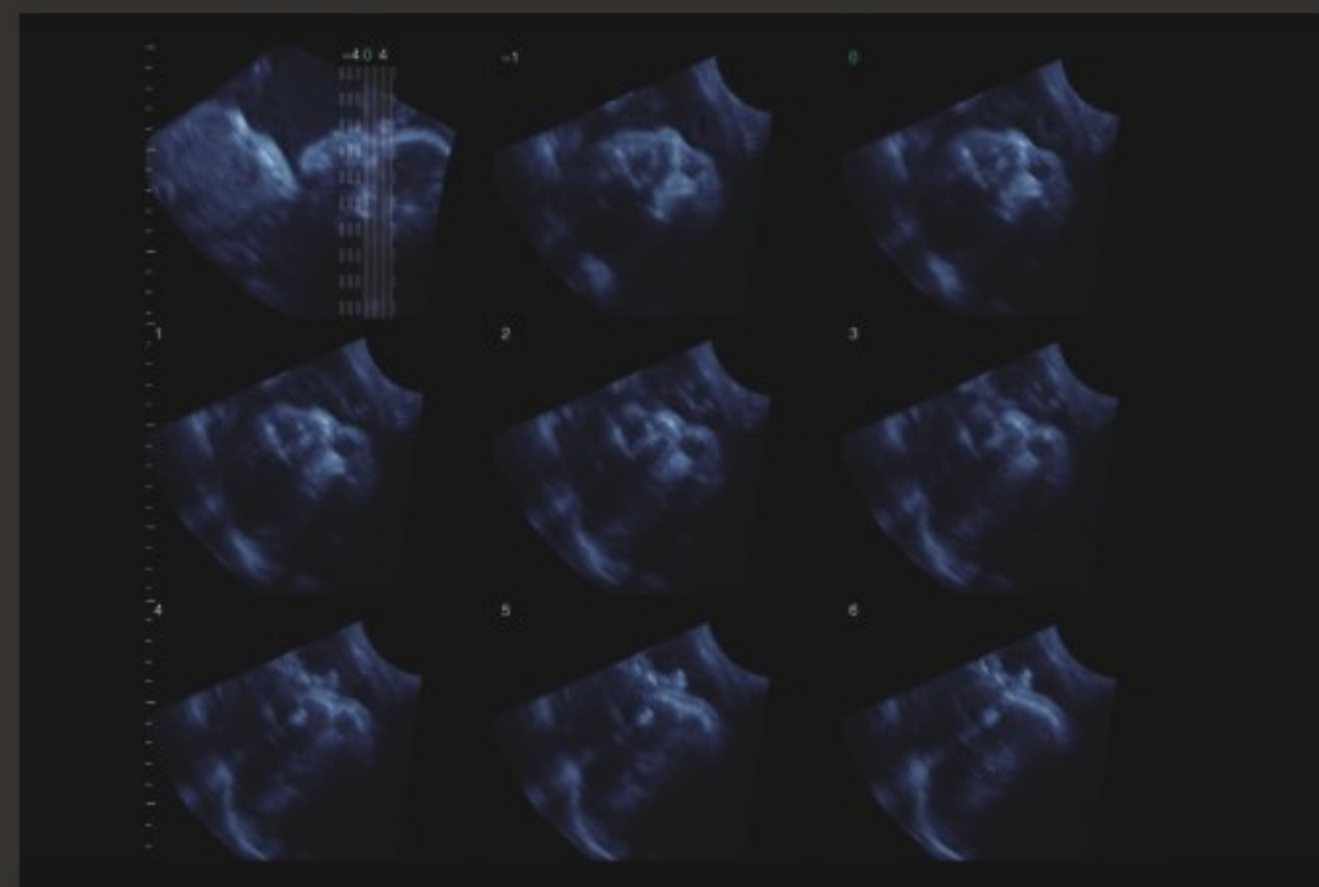
By reducing noises and artifacts, Nanoview is able to present tiny lesions in soften images with distinct tissues and enhanced edge, helping to offer reliable diagnostic results.



New 4D imaging tools contribute to lifelike images and more reliable diagnosis

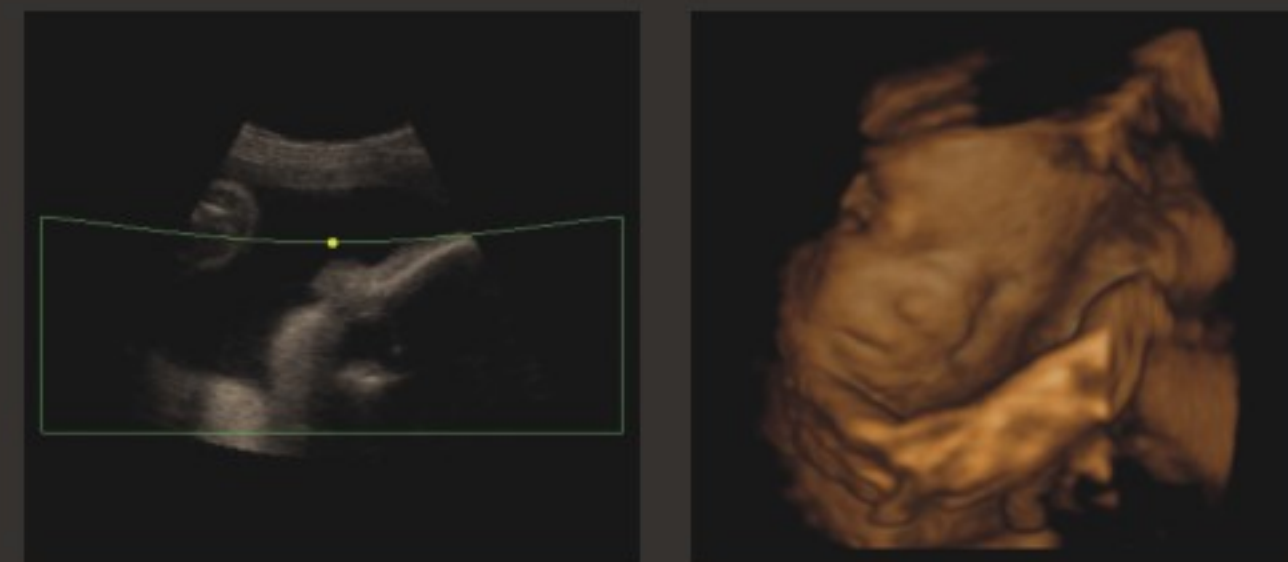
nSlice

Presenting multi-sections of the 4D object from different angles by rotating to find the needed section quickly. Diagnostic accuracy is improved by adjusting the thickness and angle of the section, so as to observe the shape, size and surroundings of the target area more clearly.



Q-Cut

By trimming the irregular images to present the target area more clearly, greatly improves diagnostic efficiency.



Opti-4D

A quick 4D optimization tool helps to obtain an ideal 4D image.



Any Cut

Erasing the unnecessary information from different angles, so as to clarify the image.

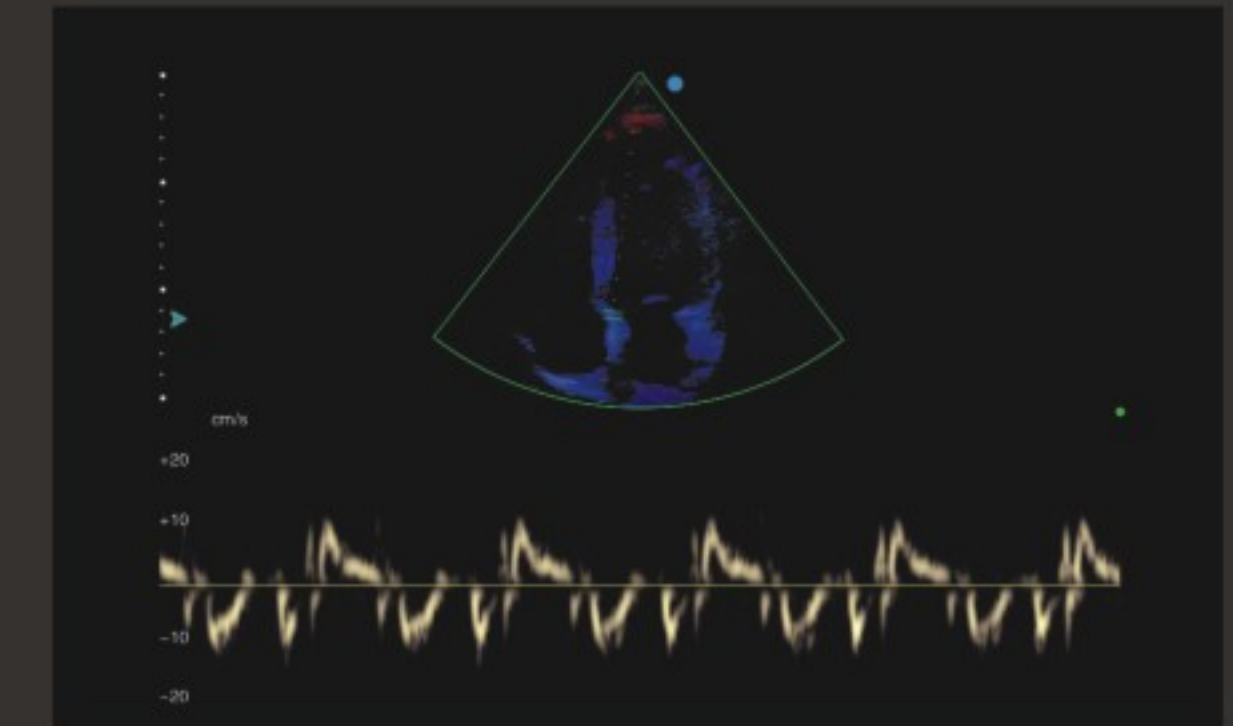
3D Printing

With a 3D printer, users can print the 3D image as a vivid baby. Meeting babies in advance will bring great fun to mothers.

Premium images and comprehensive assessment tools offer maximized clinical value

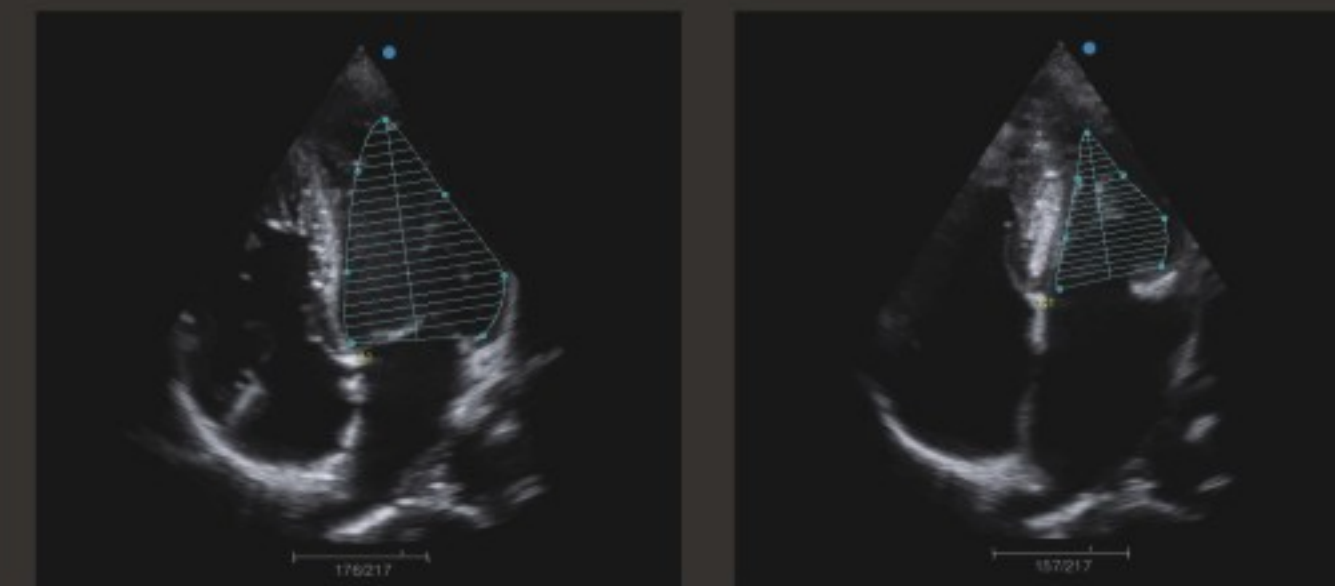
TDI (Tissue Doppler Imaging)

TDI helps to assess the directional and temporal phase of cardiac, so as to display the movement state of vascular wall and the movement speed of heart.



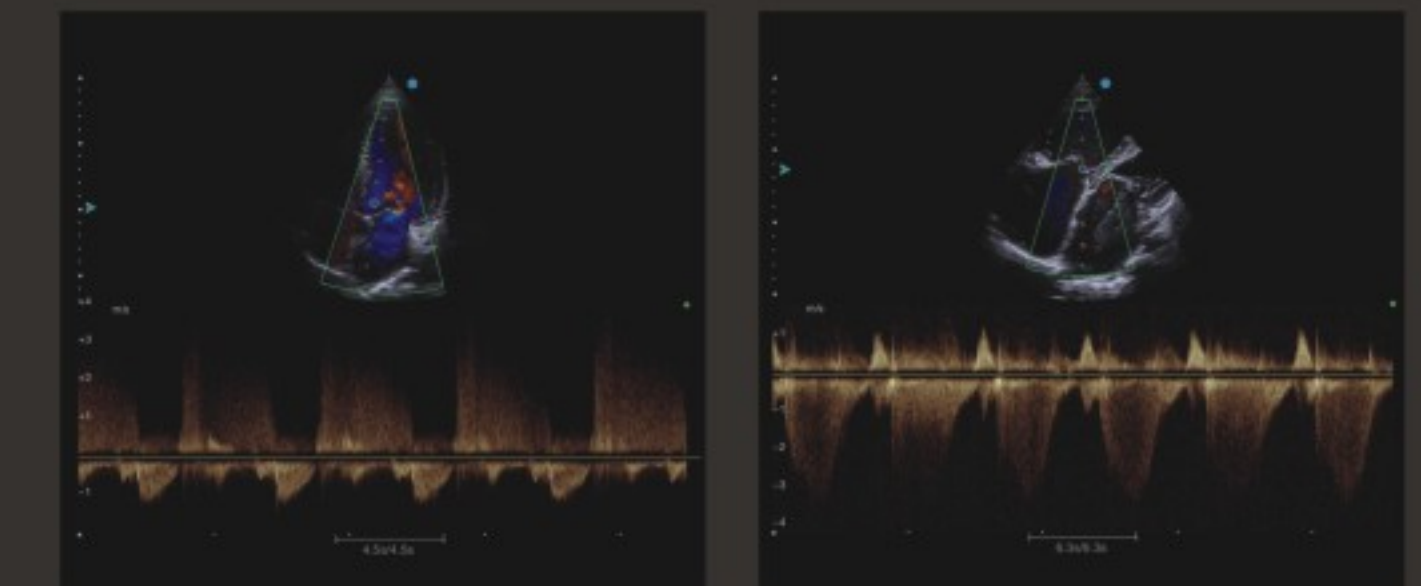
Simpson Auto Tracing

With three-point fix, the measurement saves your time and effort to obtain the information of cardiac function by automatically tracing the endocardium (fine-tuning available).



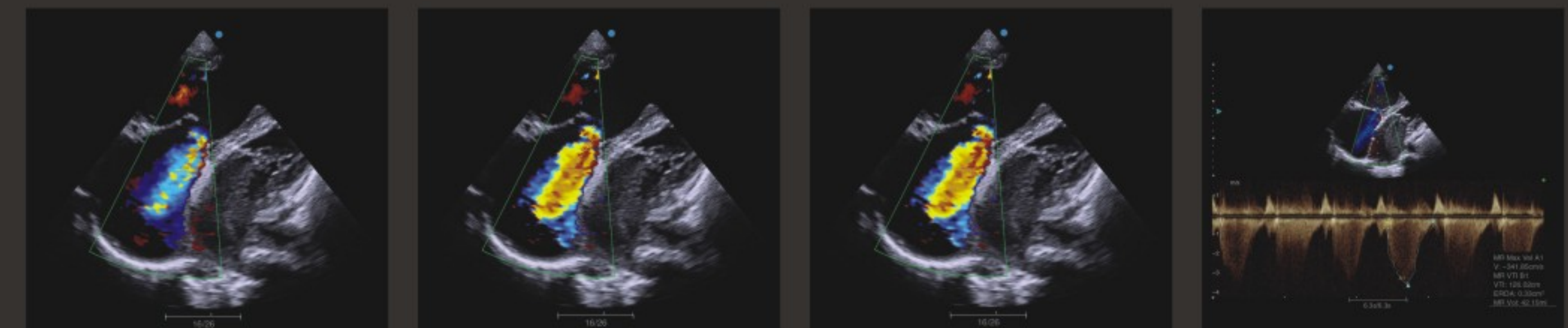
Continuous Wave Doppler

Continuous wave Doppler detects the abnormal cardiac high-speed blood.



PISA

PISA serves as an important basis to regurgitation severity assessment. With PISA, Apogee 5500 easily calculates regurgitation flow caused by cardiac valve disease, which provides significant evidence for clinical diagnosis.



Slim outline and ergonomic design make diagnosis a joyful experience



- Gel-warmer warms up the gel to comfortable temperature
- Temperature adjustable from 0~50°C



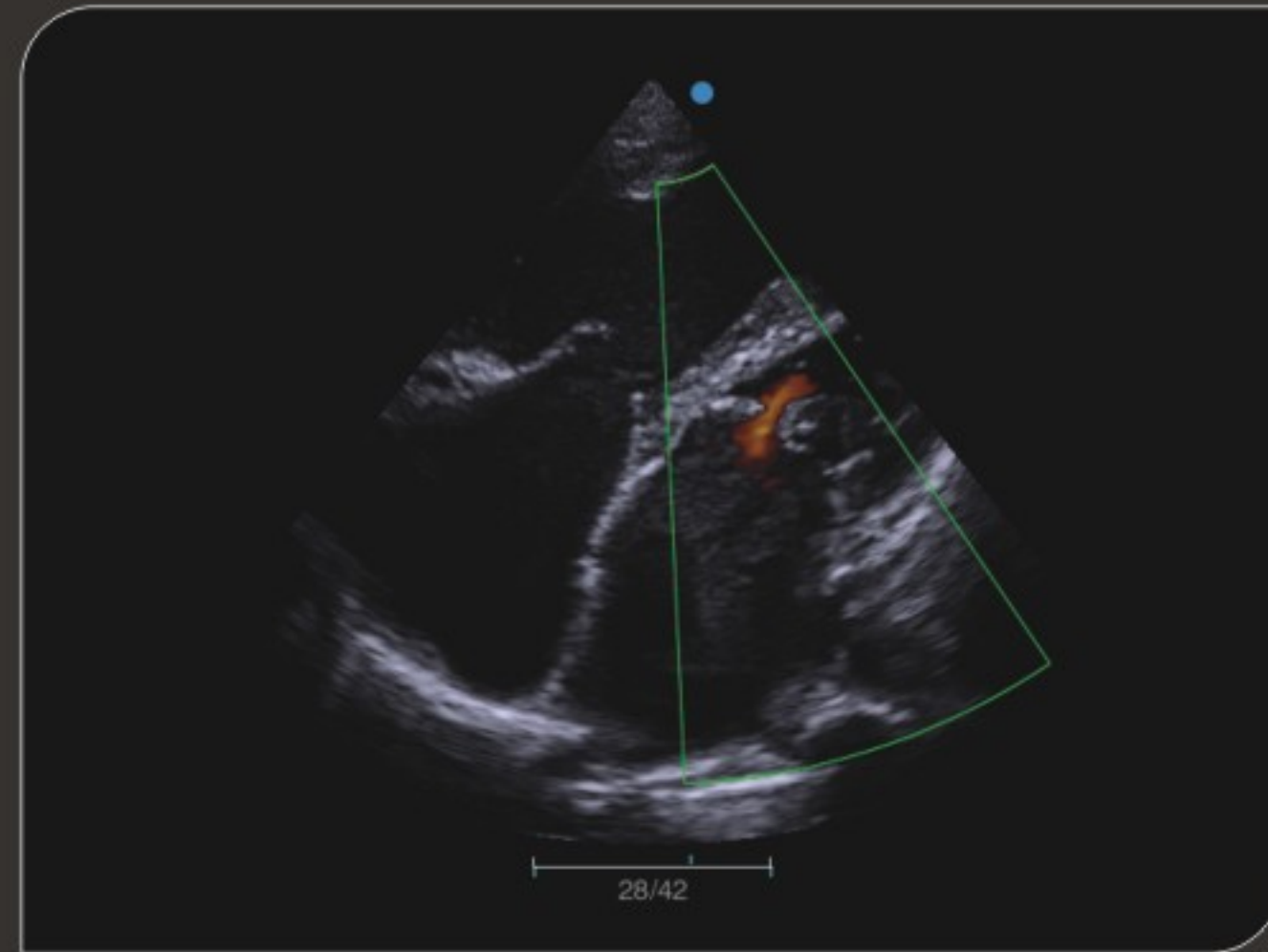
- Quickly activates Ultracloud with one button to experience different unexpected services.



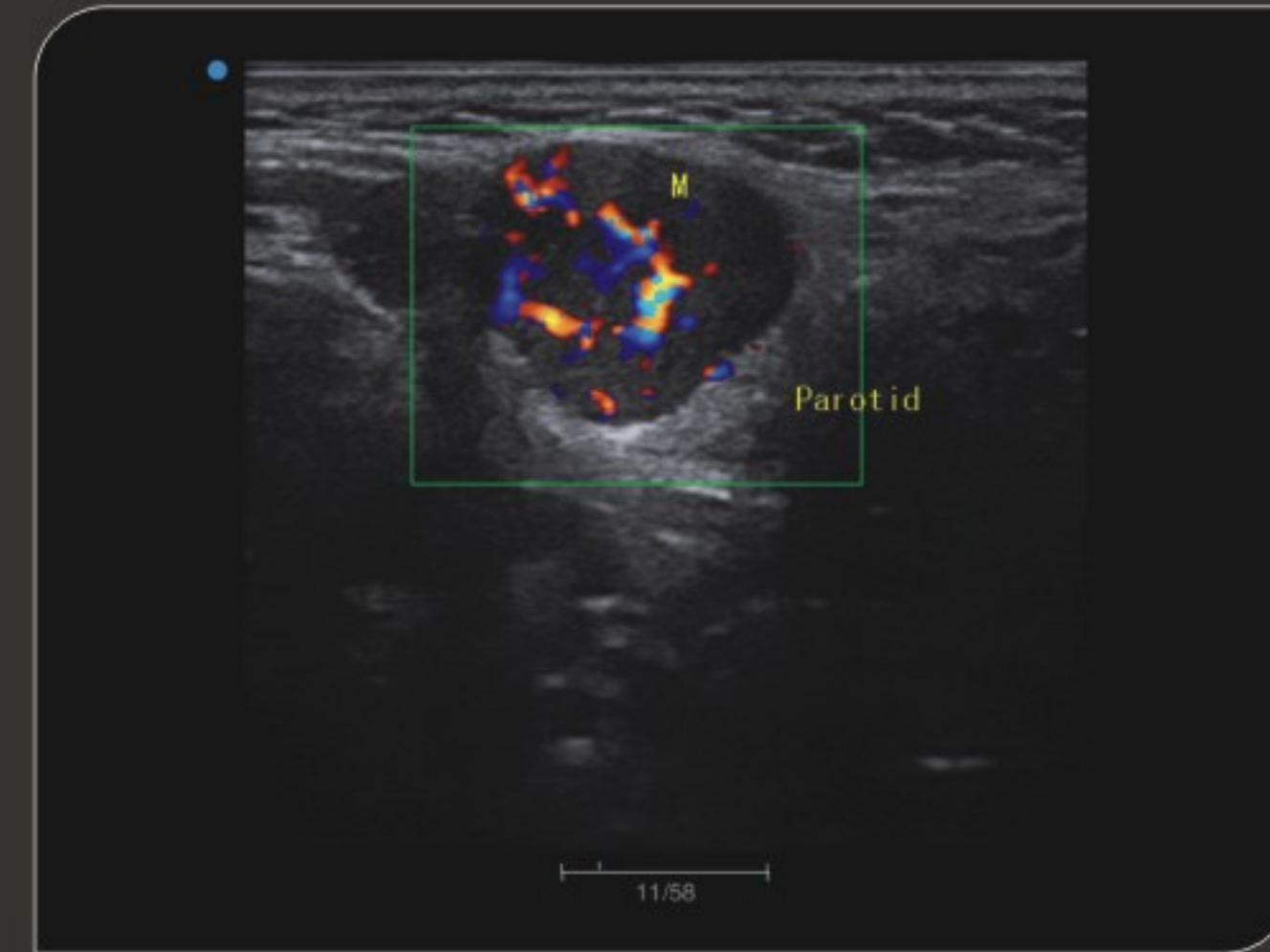
- Distinct control panel with intuitive layout
- Elaborate button and knob smooth your operation
- User-friendly design enables quick and easy activation of the functions



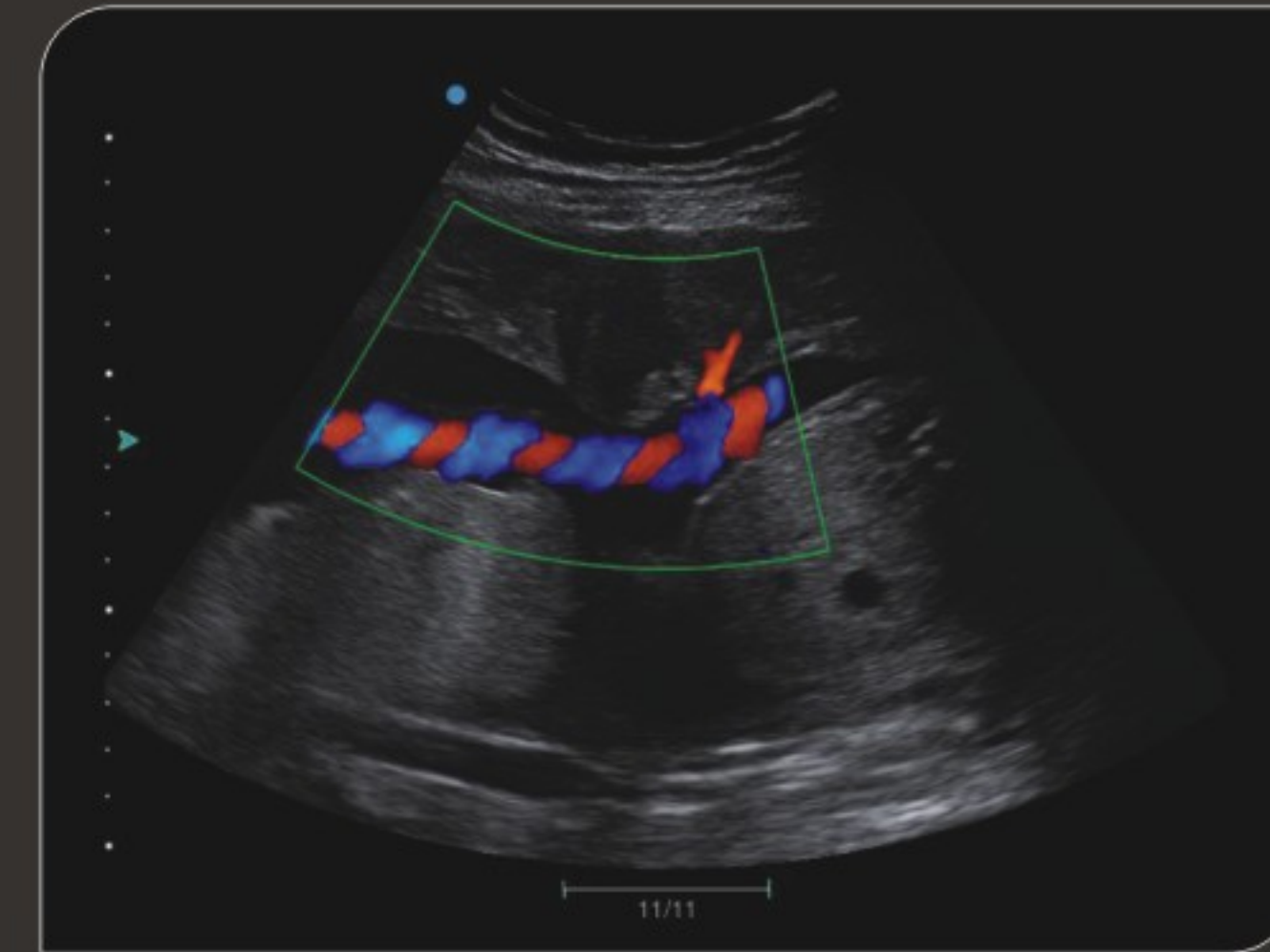
Image Gallery



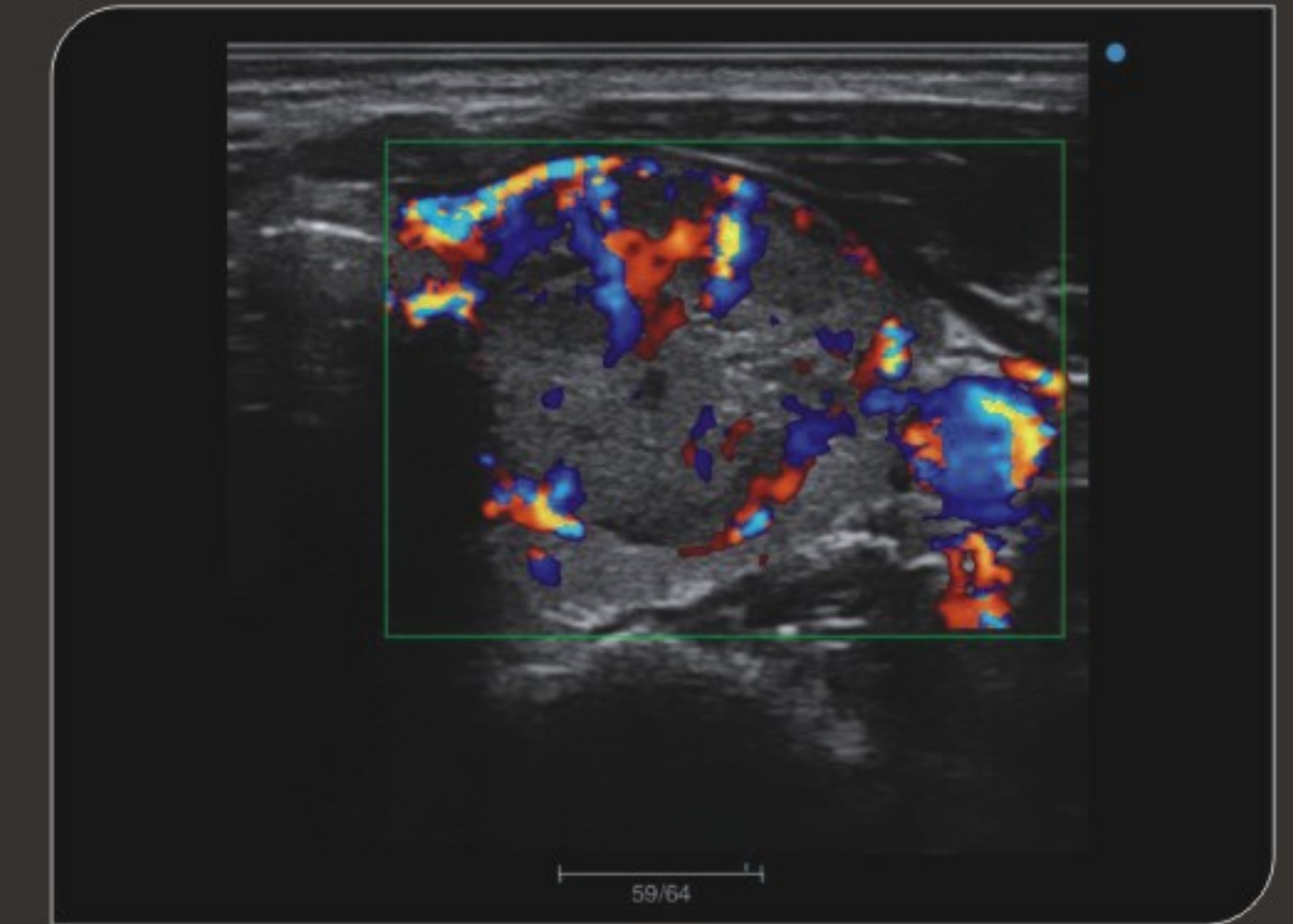
Rheumatic heart disease color mode



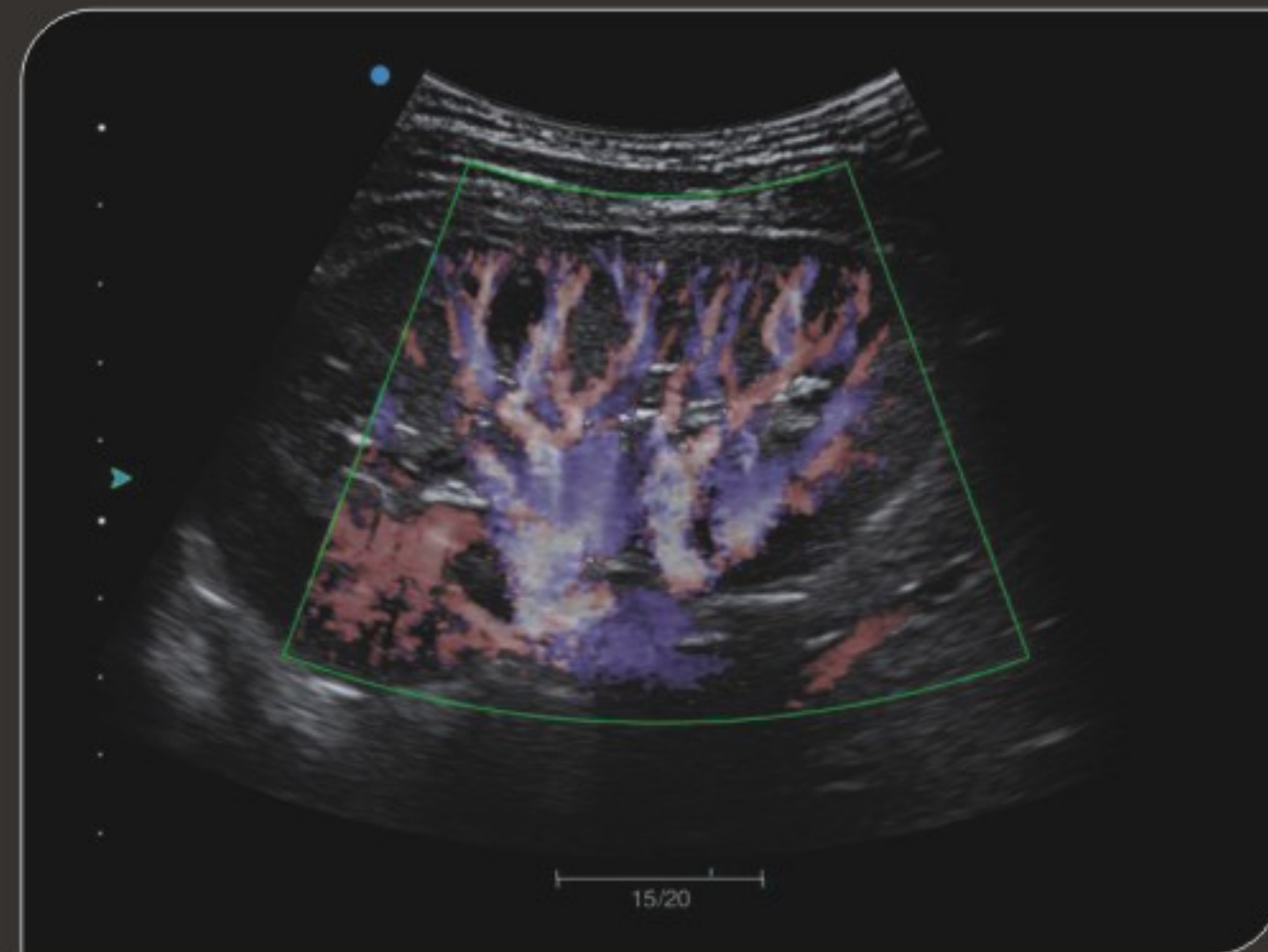
Parotid mass color mode



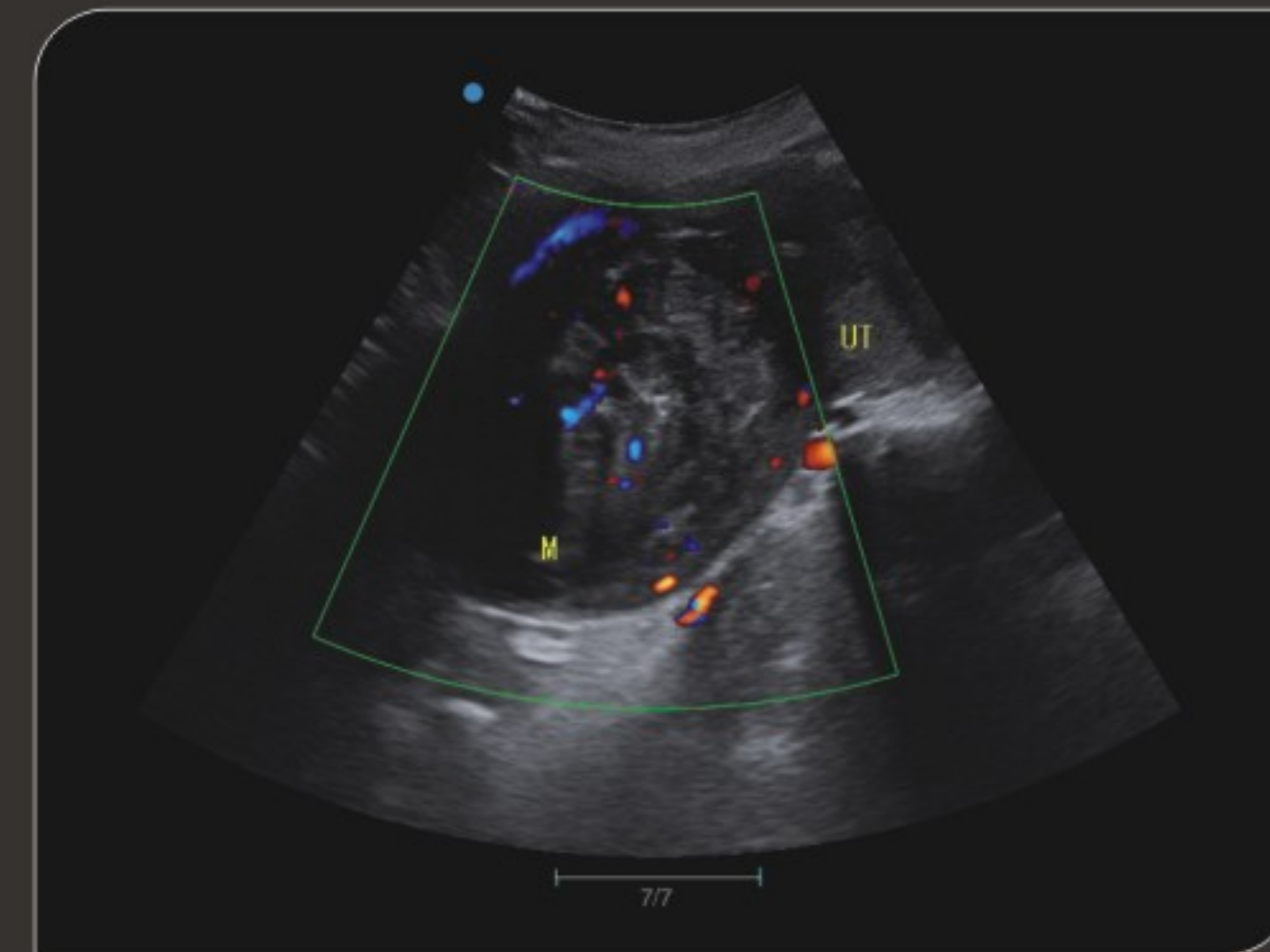
Umbilical cord color mode



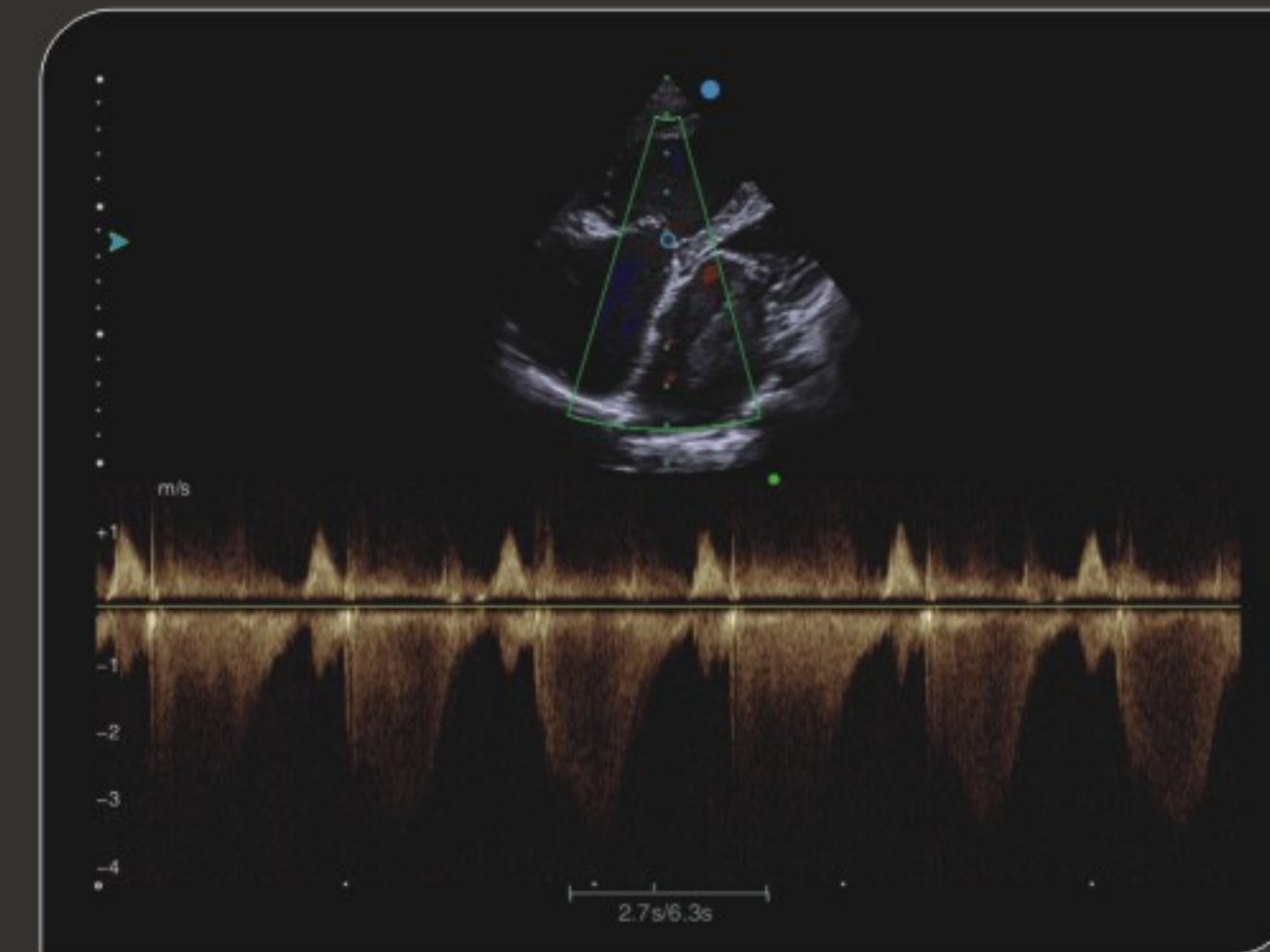
Thyroid mass color mode



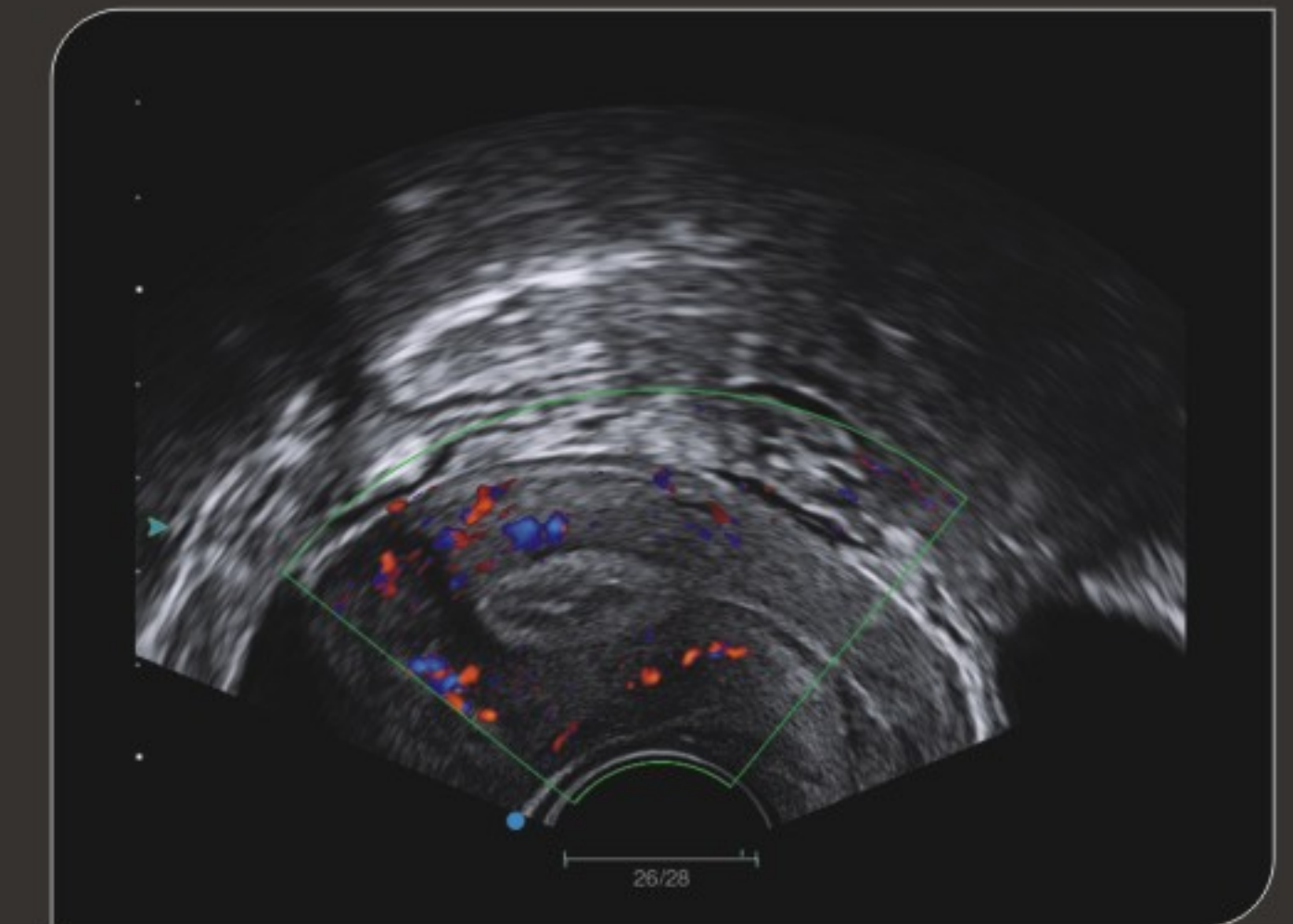
Kidney VS-flow



Hysteromyoma color mode



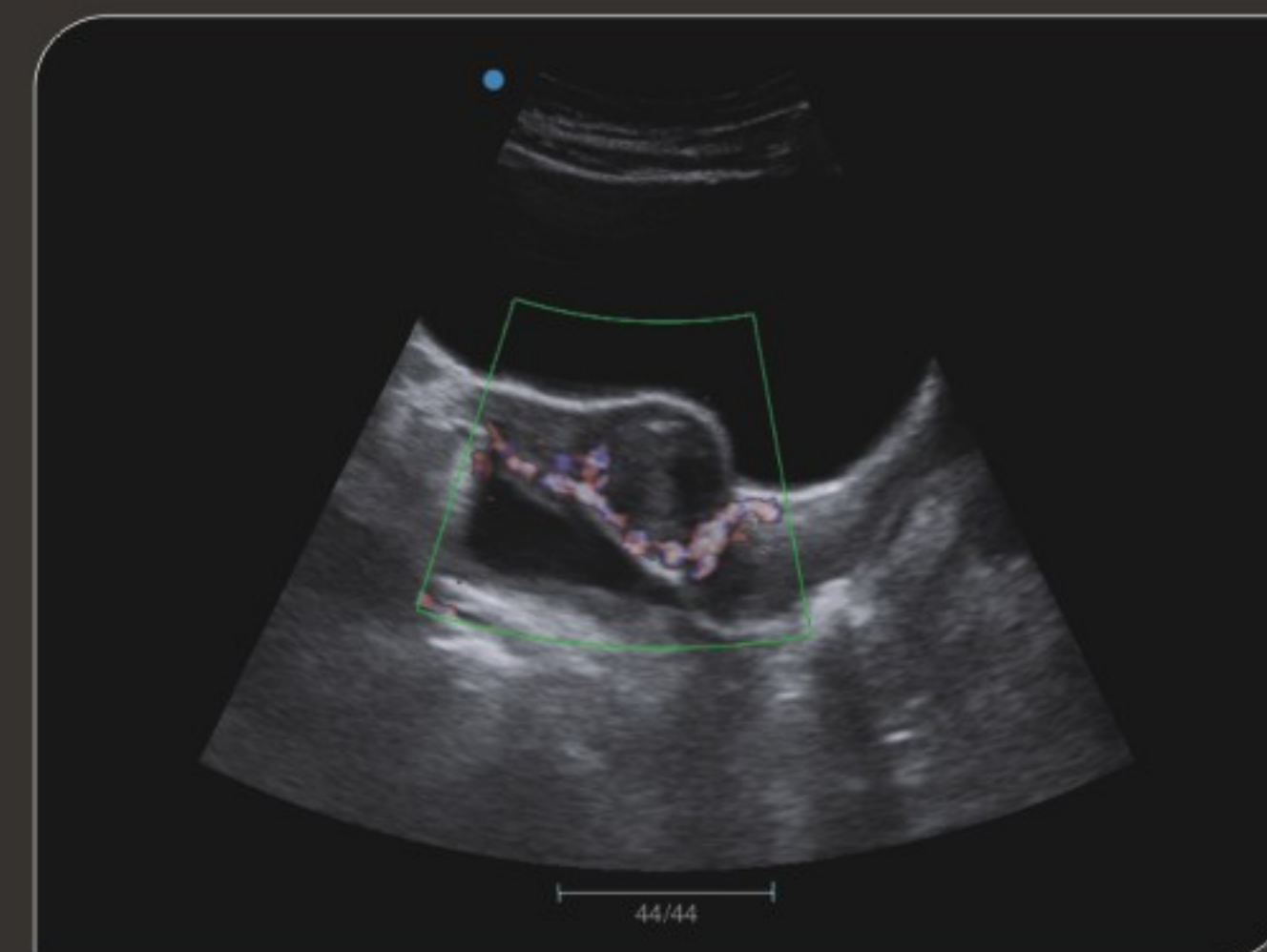
Rheumatic heart disease CW mode



Utero color mode



Pancreas 2D mode



Fibroid VS-flow



Breast mass 2D mode



Fetal heart 2D mode